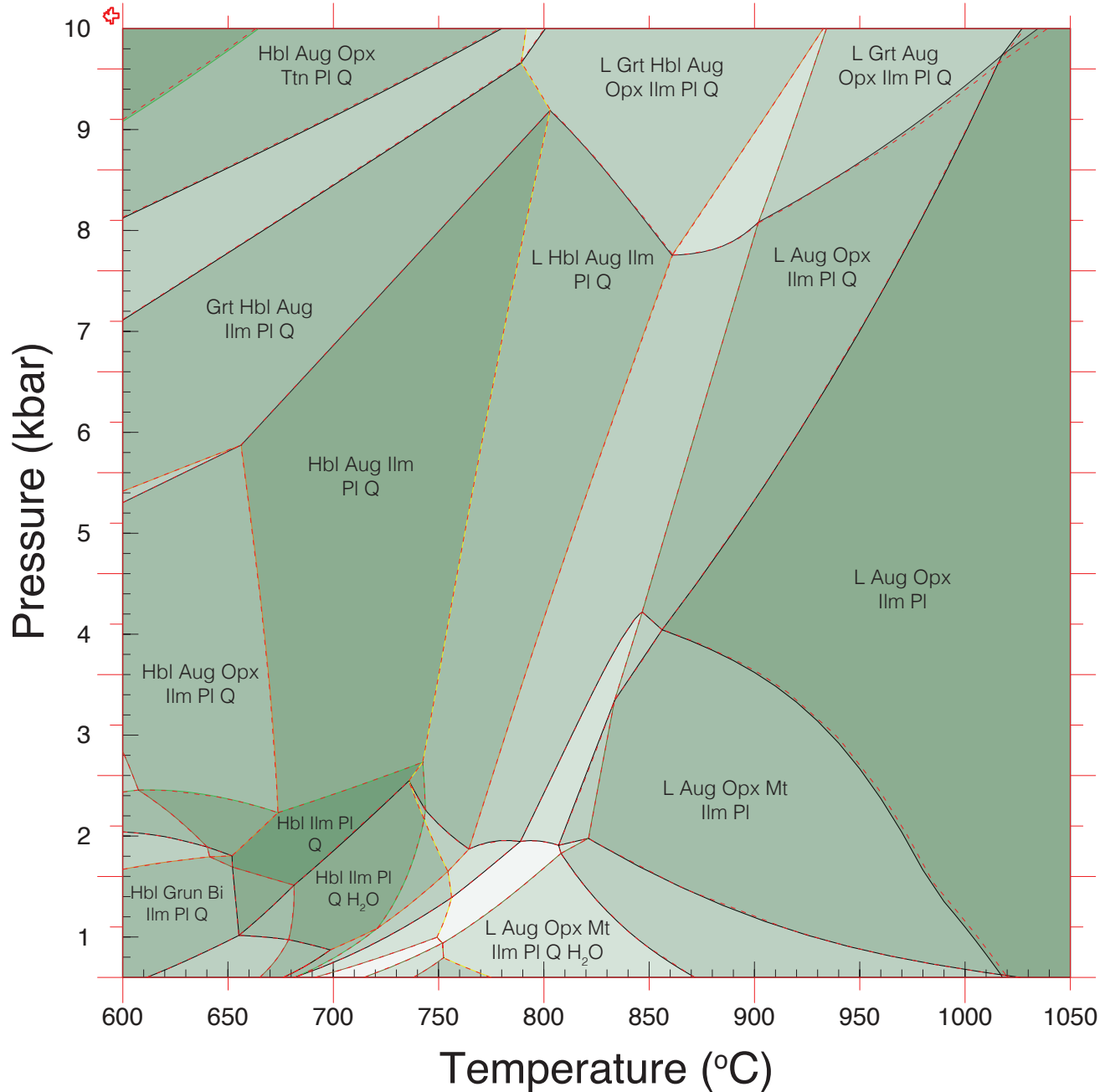


BL478 pseudosection in NCKFMASHTO [ gl\_dqf = -3 kJ/mol ]  
 Beard & Lofgren (1991) experiment composition (from Green *et al.* 2016; JMG)



calculated by  
Theriak-Domino  
-----

calculated by  
THERMOCALC  
—————  
—————  
—————

Calculation for the Beard & Lofgren (1991) metabasite melting experiment composition, as reported in Green *et al.* (2016; JMG). The thermodynamic database used was Holland & Powell (2011), ds6.2. The a-x models are those used in Green *et al.* (2016), as obtained from the THERMOCALC website in file tc-6axNCKFMASH-TOM45.txt in the metabasite\_mac.zip distribution. The models were converted to Theriak-Domino format by DKT in 2016. Program THERMOCALC, version tc345i, and program Domino (de Capitani & Brown, 1987) were used for the calculation. Theriak-Domino programs were compiled using an updated version of the 11.02.2015 distribution source code.

This figure can be compared to Fig. 4a of Green *et al.* (2016). This calculation used a dqf on the gl member of the clinoamphibole model of -3 kJ/mol, whereas Fig. 4a of Green *et al.* (2016) used 0 kJ/mol.